

The Genus *Torodera* Weise

(Coleoptera – Chrysomelidae – Alticinae)

By Gerhard Scherer

Zoologische Staatssammlung Munich

Abstract

The oriental species *Parathrylea septempunctata* (JACOBY) proved to be a representative of the genus *Torodera* WEISE, till now only known from Africa. A second species from the Himalaya (Darjeeling Distr., Bhutan, Sikkim) is described as new: *T. sexpunctata*. A key and bibliography for the african and oriental species is given.

Introduction

While working with Alticinae from the Himalaya a new species was found, which is without doubt a representative of the genus *Torodera*, till now known only from Africa. A second species described by JACOBY (1892) as *Argopistoides septempunctata*, which CHEN (1934) placed with a question mark in the genus *Parathrylea* DUVIVIER, which has its distribution in Burma: Karen Cheba, Vietnam: Hoa-Binh, S. China: Canton, and N. Sumatra belongs also to this genus. This genus proofs to be one with the known Afro-Asian distribution of its species.

Generic Characters

General shape roundish oval, convex.

Frons broad, two times or more than one diameter of eye; interantennal space broad, triangular, slightly vaulted, at the sides of its hind edge the triangular antennal calli, which are flat.

Pronotum broad, comparatively short, about two times broader than long or somewhat more, but not three times as in the description; anterior angles broadly rounded to slightly beveled and thickened; the decided difference to other genera is the callosity near the side margins, this callosity feigns on its inner margin a depressed line what is in reality the transition from the callosity to the slightly vaulted pronotum; this "depres-

sion" leads from the base about one third from the hind angle to the middle in an oblique manner towards the front angles.

Elytra very convex, confusely punctured; moderate humeral calli, no basal calli; all known species have yellowish colored elytra with black markings or vice versa.

Anterior coxal cavities open. Third tarsal segment heart shaped; first tarsal segment of hind legs somewhat longer than second and third together; claws with a basal tooth; upperside of hind tibiae flattened, its margins with stiff bristles; spur of hind tibiae short and curved.

Genotype: *Torodera octomaculata* WEISE

Genus *Torodera* WEISE

Torodera WEISE, 1902, Arch. Naturgesch. 68(1): 163 (type: *T. octomaculata* WEISE). — JACOBY, 1906, Transact. Ent. Soc. London 1906: 26. — SCHERER, 1961, Ent. Arb. Mus. Frey 12(1): 270. *Argopistoides* JACOBY, 1892, Ann. Mus. Civ. Genova 32: 931 (type: *A. septempunctata* JACOBY). — MAULIK, 1926, Fauna Brit. India, Chrys. & Halt., 301.

African Species

Torodera africana BRYANT

Torodera africana BRYANT, Ann. Mag. nat. Hist. 11(11): 821 (Uganda: Near Mpumu. — E. Mbale Distr., S. of Mt. Elgon. — Tanganyika Terr.: Kilosa).

Torodera decorata LABOISSIÈRE

Torodera decorata LABOISSIÈRE, 1941, Rev. Zool. Bot. Afr. 34: 317 (Katanga).

Torodera fasciata WEISE

Torodera fasciata WEISE, 1902, Arch. Naturgesch. 68(1): 164 (E. Africa: Umbugwe); WEISE, IN SJÖSTEDT, 1910, Kilimandjaro-Meru-Exp. 1(7): 218.

Torodera octomaculata WEISE

Torodera octomaculata WEISE, 1902, Arch. Naturgesch. 68(1): 164 (E. Africa: Kwai). — JACOBY, 1906, Transact. Ent. Soc. London 1906: 25 (Natal: Tsipango. — Malvern). — LABOISSIÈRE, 1939, Rev. Zool. Bot. Afr. 32 (3–4): 407 (Haut Uelé: Moto). — SCHERER, 1962, Parc National de la Garamba, Inst. Parcs Nationaux du Congo, Bruxelles, Fasc. 31(1): 60 (Haut Uelé: Garamba Parc); 1963, Ent. Arb. Mus. Frey 14: 682 (Tanganjika: Mt. Meru; Arusha; Moshi).

Torodera ornata (JACOBY)

Amphimela ornata JACOBY, 1895, Transact. Ent. Soc. London 1895: 326 (Mashonaland); 1906, loc. cit. 25.

Toroderma ornata: CSIKI IN HEIKERTINGER & CSIKI (ed. JUNK), 1940, Coleopterorum Catalogus 25 (169): 500. — SCHERER, 1962, Parc National de la Garamba, Inst. Parcs Nationaux du Congo, Bruxelles, 31 (1): 60 (Haut Uelé: Parc Nat. Garamba).

***Toroderma picturata* (JACOBY)**

Eutornus picturata JACOBY, 1903, Transact. Ent. Soc. London 1903: 6 (Mashonaland).

Toroderma picturata: SCHERER, 1962, Ann. Mus. R. Afr. Centrale Tervuren IN-8°, Sci. Zool. no. 113: 79 (Kibali-Ituri).

Oriental Species

***Toroderma septempunctata* (JACOBY) nov. comb.**

Argopistoides septempunctata JACOBY, 1892, Ann. Mus. Civ. Genova 32: 932 (Burma: Karen Cheba). — MAULIK, 1926, Fauna India, Chrys. & Halt. 302.

Parathrylea septempunctata: CHEN, 1934, Sinensia 5 (3-4): 338, fig. 67 (Canton; Tonkin: Hoa-Binh). — GRESSITT & KIMOTO, 1963, Pacif. Ins. Monogr. 1B: 834 (Fukien). — SCHERER, 1969, Pacif. Ins. Monogr. 22: 229.

***Toroderma sexpunctata* nov. spec.**

Fig. 1

Length: σ 4,7 mm; width 3,0 mm.

Head, pronotum, Scutellum, and elytra yellowish brown; close to the base of the elytra two black roundish spots, one somewhat larger at the humeral calli and one close to the scutellum; across the middle three roundish spots, all of the same size; the sixth spot close to the apex; antennal segments 1-4 yellowish brown, 5-10 black, 11 dark reddish brown stained with piceous; tarsi, apex of all tibiae and hind femora infuscated.

Head somewhat broader than long; when seen from above head 1,14 mm broad, frons 0,66 mm between the eyes on their inner hind edge; one square diameter of one eye 0,24 mm; head throughout covered with extremely fine scattered punctures; the triangular antennal calli at both sides of the hind edge of the triangular interantennal space, horizontally bounded behind.

Antennae extending only over base of elytra; lengths of antennal segments in millimetres: 0,32 : 0,12 : 0,19 : 0,14 : 0,16 : 0,18 : 0,18 : 0,18 : 0,18 : 0,16 : 0,24.

Pronotum covered with extremely fine scattered punctures like on head; width of pronotum 1,94 mm, broadest on base; sides slightly rounded and converging somewhat in front; width at frontal setal pore 1,68 mm; length in the middle 0,88 mm.

Elytra finely but stronger punctured than pronotum.

Variation: All six paratypes are females and show no variation in colour. There is a variation in length from 4,6-4,66 mm, average 4,48 mm ($n = 6$), width 3,00-3,30 mm, average 3,18 mm ($n = 6$).

Localities: Holotype, Sikkim, Village 9th mile nr. Rani Pull, 800 m, 24.4.1977 1 ♂. — Bhutan, Samchi, 350 m, 7.-11.5.1972 3 ♂♂. — Bhutan, Phuntsholing, 2-400 m,

5.5.1972 1♂. — District Darjeeling, Lebong, 1800–1900 m, 8.9.1975 1♂, leg. W. Wittmer (Holotype and four paratypes in Naturhistorisches Museum Basel, 2 paratypes Zoologische Staatssammlung München).

Torodera sexpunctata is closely related to *T. septempunctata* (JACOBY). *T. septempunctata* is smaller, length 3,4–3,6 mm, description says 4 mm, width 2,4–2,5 mm (*sexpunctata*: length 4,6–4,7 mm, width 3,0–3,3 mm); pronotum is narrower 1,6–1,7 mm (*sexpunctata* 1,94–2,14 mm); the inner basal spot on elytra is not so close to scutellum than in *sexpunctata*; *septempunctata* has two dark apical spots on elytra; the single apical spot in *sexpunctata* is closer to the apex; *sexpunctata* has all tibiae apically darkened, *septempunctata* not so.

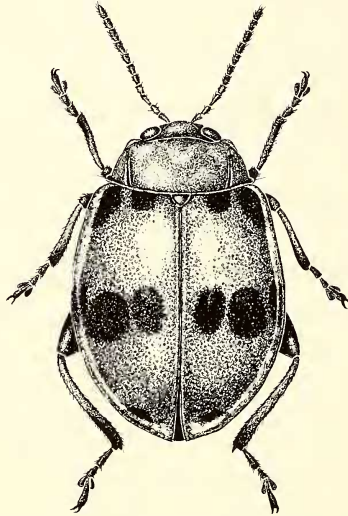


Fig. 1: *Torodera sexpunctata* nov. spec.

Key to the African *Torodera* Species

- | | | |
|---|--|-----------------------------|
| 1 | Elytra yellowish with black markings | 2 |
| – | Elytra black with yellowish to testaceous markings | 4 |
| 2 | Elytra yellow, suture and three transverse bands black | |
| | <i>ornata</i> (JACOBY) and <i>fasciata</i> WEISE | |
| – | Only one transverse band and spots | 3 |
| 3 | On each elytron two black spots at the base, a median transverse band not extending to the side margins, two black spots near the apex | <i>africana</i> BRYANT |
| – | As above, but only one black spot near the apex | <i>octomaculata</i> WEISE |
| 4 | Elytra black, epipleurae yellow and six yellow spots | <i>decorata</i> LABOISSIÈRE |
| – | Elytra black, a round spot near the scutellum, a transverse band near the apex and the lateral margins testaceous | <i>picturata</i> (JACOBY) |

Key to the Oriental Toroderinae Species

- 1 Each elytron with seven small black spots: two placed in a transverse line at the base, three across the middle, two obliquely at the apex *septempunctata* (JACOBY)
 — As above, but only one black spot at the apex *sexpunctata* nov. spec.

Acknowledgements

I am greatly indebted to Mr. M. Kühbandner for the drawing and Mr. M. Döberl for providing me with material of *T. septempunctata* from N. Sumatra.

Literature

- CHEN, S. H., 1934. Revision of the Halticinae (Col. Chrysomelidae) of Yunnan and Tonkin. Sinensia 5: 225–416.
 GRESSITT, J. L. and KIMOTO, S., 1963. The Chrysomelidae (Coelopt.) of China and Korea. Part 2. Pacific Insects Monograph 1B: 301–1026.
 JACOBY, M., 1892. Viaggio di Leonardo Fea in Birmania e Regioni Vicine LI. Description of the New Genera and Species of the Phytophagous Coleoptera. Ann. Mus. civ. Genova 32: 917–941.
 MAULIK, S., 1926. The Fauna of British India including Ceylon and Burma. London, I–XIII, 1–442.
 SCHERER, G., 1961. Bestimmungsschlüssel der Alticinae-Genera Afrikas (Col. Phytoph.). Ent. Arb. Mus. Frey 12(1): 251–288.
 — — 1969. Die Alticinae des Indischen Subkontinentes (Coleoptera-Chrysomelidae). Pacific Insects Monograph 22: 1–251.
 WEISE, J., 1902. Afrikanische Chrysomeliden. Archiv für Naturgeschichte 68(1): 119–174.

